

**1191 Wellington Drive,  
North Vancouver, B.C.**

Main Floor: 702 sq.ft.  
Upper Floor: 612 sq.ft.  

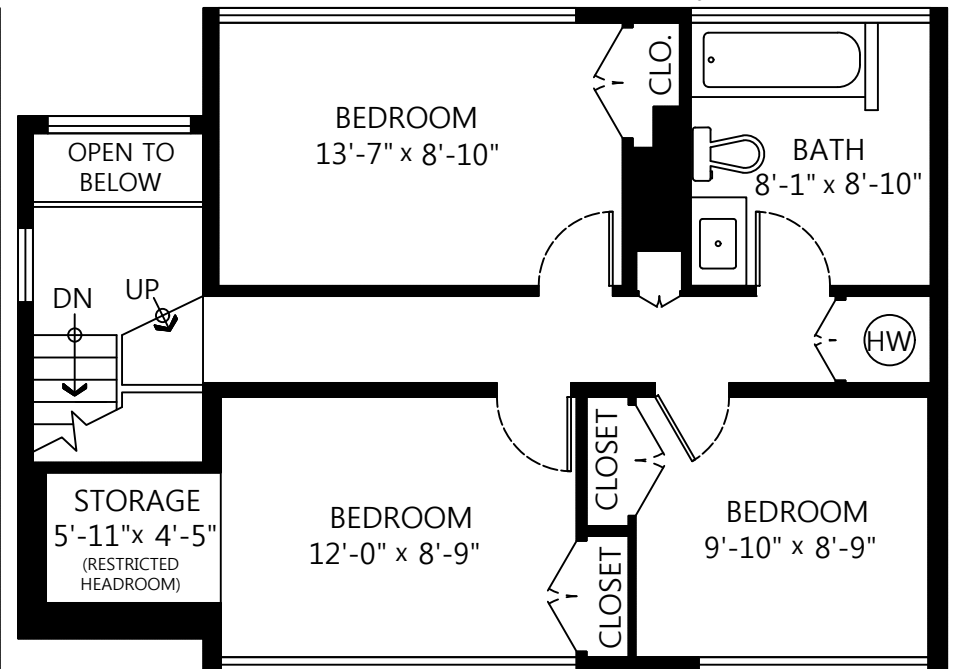
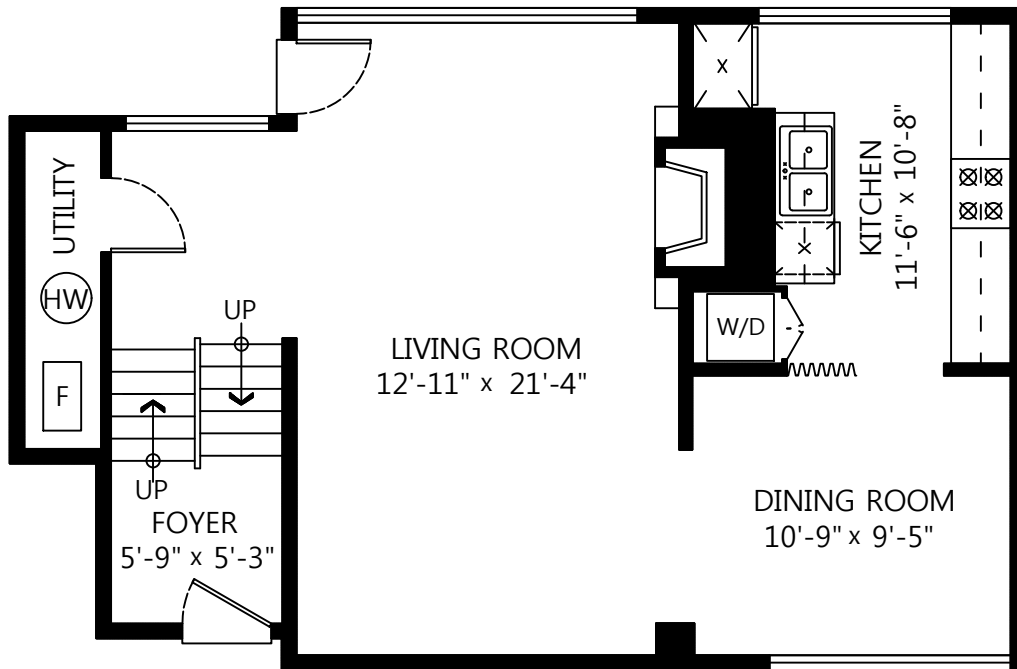
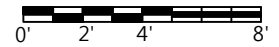
---

Total: 1,314 sq.ft.

Open to Below: 18 sq.ft.  
Restricted H.R.: 37 sq.ft.



SCALE



**MAIN FLOOR PLAN**

Floor Area: 702 sq.ft.  
Ceiling Height: 8'-5"

**UPPER FLOOR PLAN**

Floor Area: 612 sq.ft.  
Ceiling Height: 8'-5"